



Test & Calibration

- electrical -



Cedar
J108i, J108a

CONTENTS

1	Go/NoGo Testing	3
1.1	Antenna Coupler	3
1.2	Direct Line	4
1.3	Attenuation Factors	6
1.3.1	Loss Values – Antenna Coupler	6
1.3.2	Loss Values – Direct Line	7
2	SERP Calibration	8
2.1	Calibration Setup	8
2.2	Calibration Procedure	9
2.2.1	Test Program (ETS) Flashing	12
2.2.2	Finding the right port number	12
2.2.3	Calibration Instructions	12
2.2.4	Re-Customization	13
3	Revision History	14

This product is ONLY implemented in SERP II



1 Go/NoGo Testing

This Go/NoGo testing has to be carried out in two ways, with an:

- Antenna Coupler.
- Cable in shield box.

For more information on Antenna Coupler and Cable in shield box testing, refer to 1220-1336: Generic Repair Manual – electrical, section ‘Setup Go/NoGo Test’!

For part no's on the equipment below, refer to the ‘Tools Catalogue/Matrix’!

1.1 Antenna Coupler

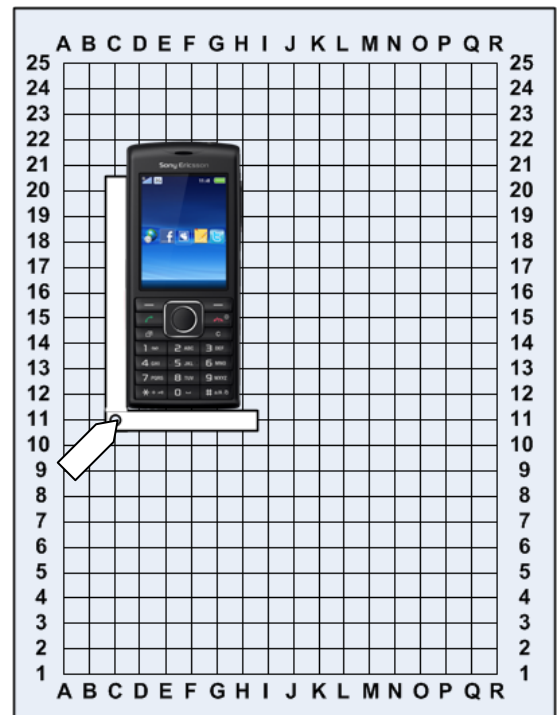
The following equipment has to be used:

- Rohde & Schwartz RF Shield Package
 - Rohde & Schwartz RF Shield Box
 - Rohde & Schwartz RF Coupler
 - Grid Positioning Holder
- RF Test Cable Flexible 1M
- RF Adapter for RF Shield Box
- USIM Card, instrument specific

GSM-850/900/1800/1900

WCDMA-850/1900/2100

Put the grid positioning holder with its reference point in position **C11** and place the phone as shown in the adjacent picture.





Go/NoGo Testing

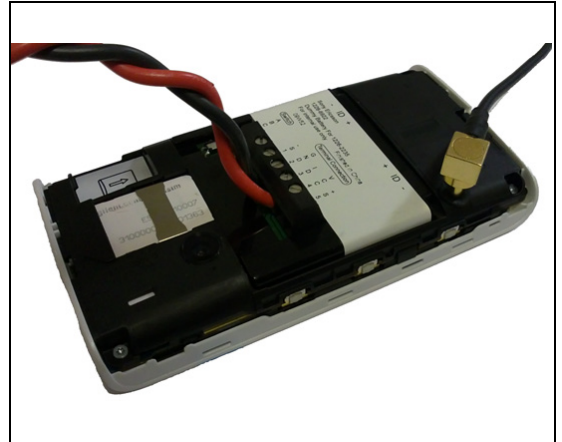
1.2 Direct Line

The following equipment has to be used:

- RF Test Cable Flexible 1M
- RF Probe and support sleeve
- Dummy Battery with external power supply and cables (if not using a fully charged battery)

Connect the RF Probe as shown in the adjacent picture.

To get access to the RF connector on the PBA, refer to 1237-5040: J108 Working Instructions, section 3.1!



Go/NoGo Testing

Follow the directions stated in 'Go/NoGo Test Script Parameters' to be found in 1220-1336: Generic Repair Manual – electrical, together with the 'Attenuation Factors' below!

This phone is available as two versions, J108i and J108a, including the following bands:

J108i:

GSM-850/900/1800/1900

WCDMA-2100

J108a:

GSM-850/900/1800/1900

WCDMA-850/1900/2100

Go/NoGo Testing

1.3 Attenuation Factors

The attenuation values listed below in 1.3.1 and 1.3.2 are valid only when the equipment listed on the previous pages is being used!

1.3.1 Loss Values – Antenna Coupler

1.3.1.1

Band	Channel	Attenuation J108i		J108a	
		Rx	Tx	Rx	Tx
GSM 850	Low	4.00	14.42	4.00	14.42
	Mid	4.00	9.54	4.00	9.54
	High	4.00	6.17	4.00	6.17
GSM 900	Low	6.00	4.00	6.00	4.00
	Mid	8.00	4.88	8.00	4.88
	High	9.00	6.30	9.00	6.30
GSM 1800	Low	15.00	15.07	15.00	15.07
	Mid	13.00	15.60	13.00	15.60
	High	14.00	16.76	14.00	16.76
GSM 1900	Low	14.50	15.87	14.50	15.87
	Mid	12.00	14.52	12.00	14.52
	High	12.50	14.41	12.50	14.41
WCDMA 850	Low	-	-	6.00	11.30
	Mid	-	-	7.00	8.76
	High	-	-	8.00	8.12
WCDMA 1900	Low	-	-	10.00	12.79
	Mid	-	-	10.00	10.63
	High	-	-	12.00	9.22
WCDMA 2100	Low	14.50	14.85	14.50	14.85
	Mid	12.00	14.09	12.00	14.09
	High	12.50	13.24	12.50	13.24



Go/NoGo Testing: Attenuation Factors

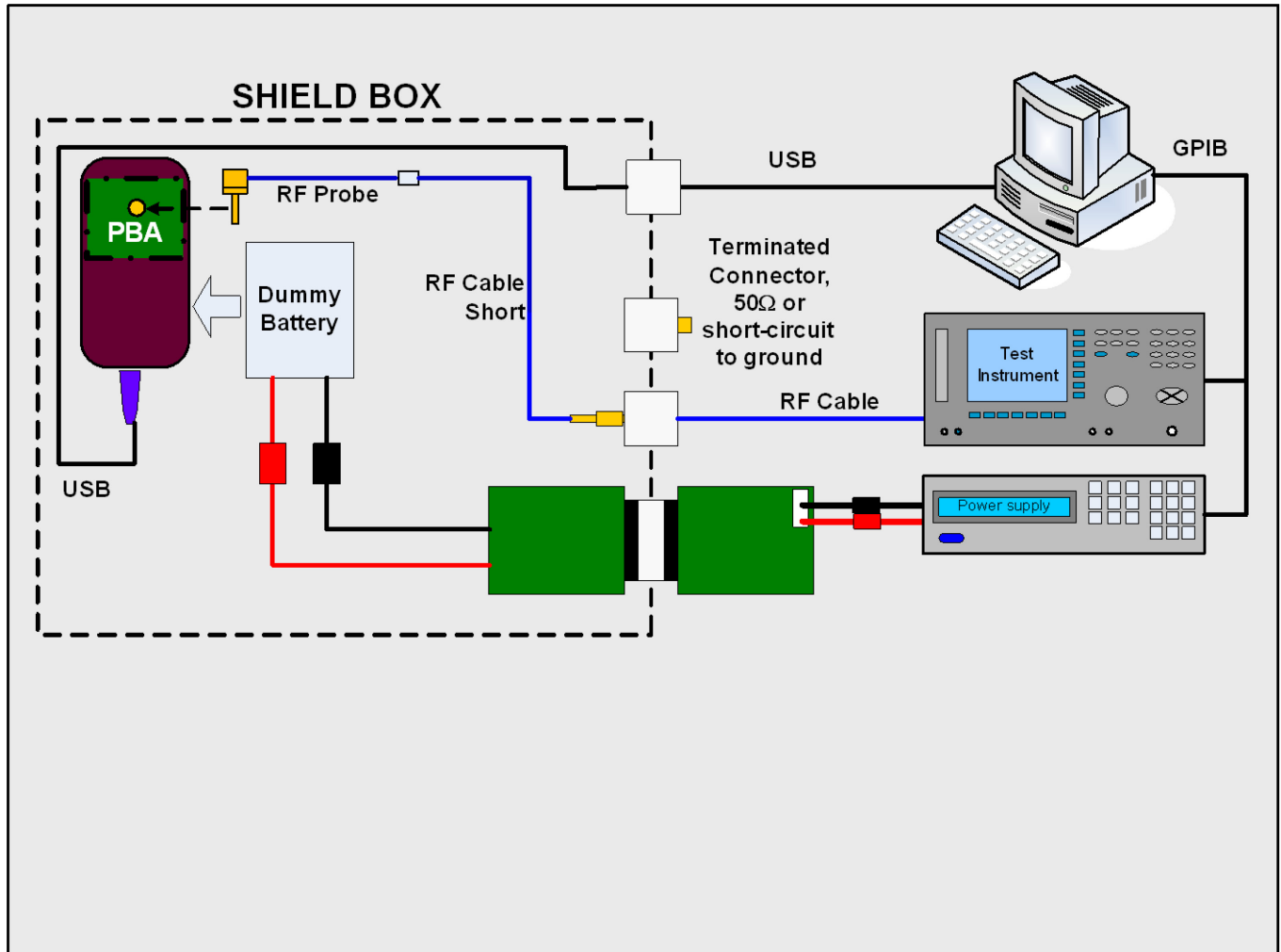
1.3.2 Loss Values – Direct Line

Band	Channel	Attenuation	
		Rx	Tx
GSM 850	All	0.8	0.8
GSM 900	All	0.8	0.8
GSM 1800	All	1.3	1.3
GSM 1900	All	1.3	1.3
WCDMA 850	All	1.3	1.3
WCDMA 1900	All	1.5	1.5
WCDMA 2100	All	1.5	1.5



2 SERP Calibration

2.1 Calibration Setup



For authorized centers only!

Due to the sensitivity of the phone from outside interference during GSM/WCDMA calibration, a Shield Box and Service Tool Set Interface are required for GSM/WCDMA calibration.

The equipment used to connect the Power supply with the Dummy battery is the same used in SERP I which connects to SEPI. Only power cables are used in this setup.

Connect and set-up in accordance with the picture above!

Connect the RF Probe to the phone's PBA by following the instructions of section 1.2!

For part no's on the equipment above, refer to the 'Tools Catalogue/Matrix'!



SERP Calibration

2.2 Calibration Procedure

A test program must be loaded into the phone before starting the calibration procedure!

After completed calibration the phone must be re-customized with signaling software!

Note: To find the right port number to use as DUT Address in SERP II is different. See chapter 2.2.2 for instructions how to find it!

2.2.1 Test Program (ETS) Flashing

The ETS flashing into the phone is done as follows:

1. Attach a fully charged battery to the phone.
2. Open the Emma application and log in.
3. Check that the phone is powered off.
4. Press and hold the 'C' key down and connect the phone to the USB flash cable.
Release the 'C' key when the USB icon appears on the Emma screen.
5. Select the 'J108 ETS' protocol and follow the on-screen instructions.

The display of the phone will usually become blank when the ETS is installed.

2.2.2 Finding the right port number

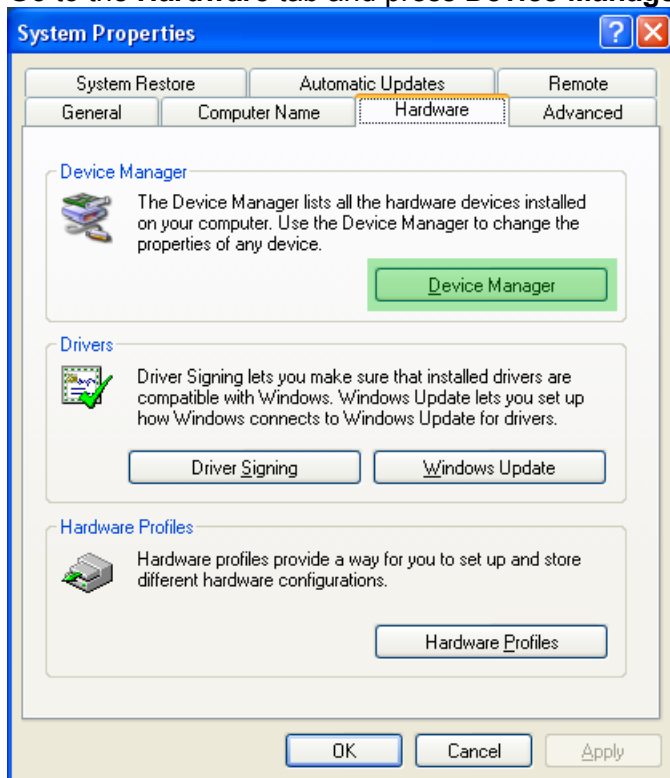
To find the right port number proceed as follows:

1. Attach a charged battery (or dummy battery) to the phone.
2. Power on the phone manually.
3. Connect the phone to an USB port **exact when the display turns on.**
4. Go to Start / My Computer / Properties

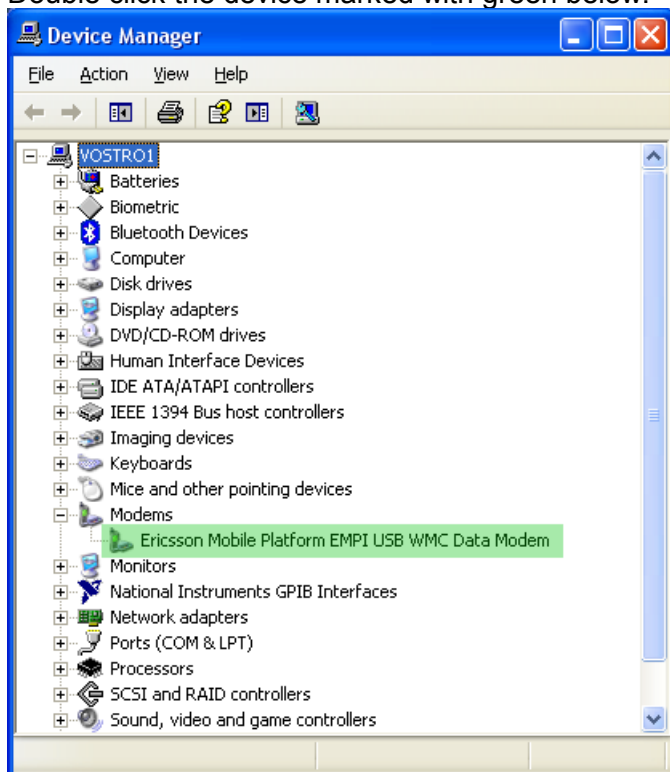




5. Go to the **Hardware** tab and press **Device Manager**.

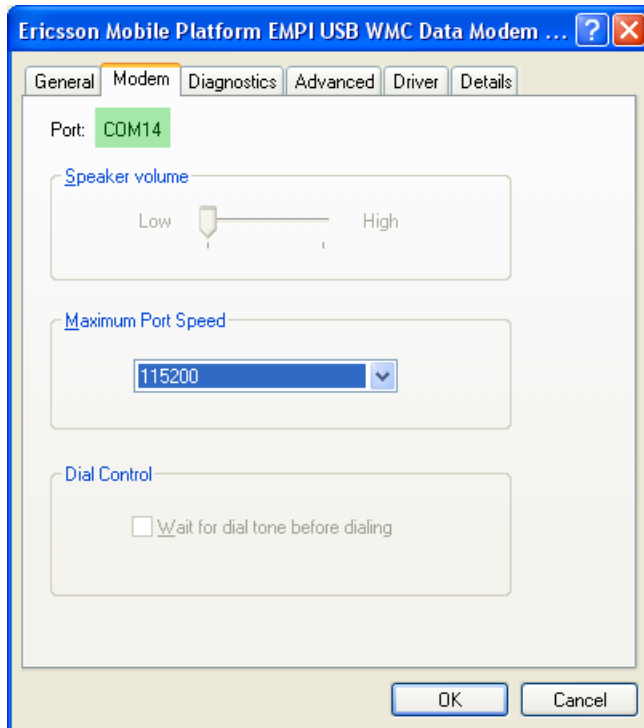


6. When the phone has started, this shows up.
Double click the device marked with green below.





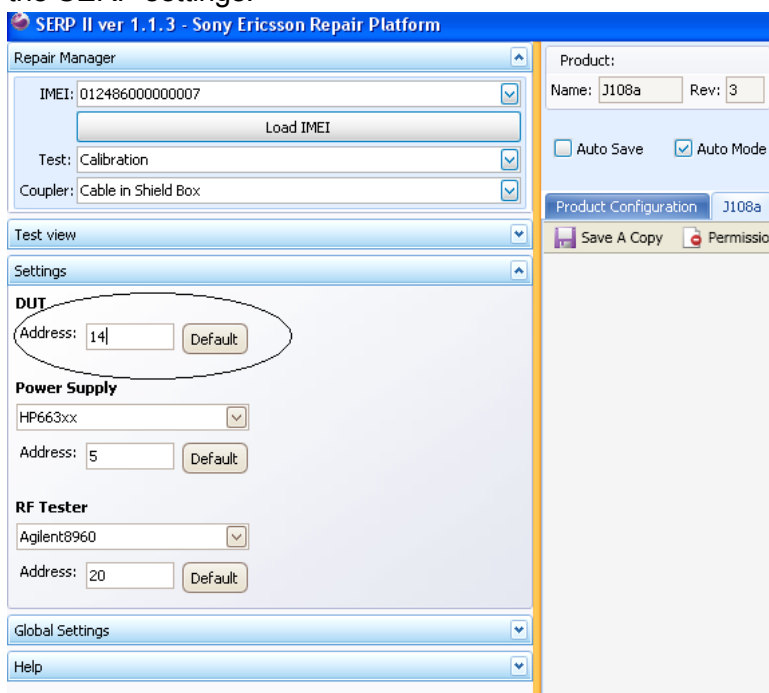
- Go to the **Modem** tab, and the port number is marked in green below.
The **DUT address** in this case is **14**.



2.2.3 Calibration Instructions

Start the SERP II program by double-clicking on the **SERP II.exe** icon on the desktop:

- Click on the **Repair Manager Tab** and enter (or scan) the IMEI number of the phone to be calibrated into the **IMEI** box.
- Select test: **Calibration**, and **Cable in Shield Box** in the Coupler drop down box
- Check the **Settings tab** verify that the test instrument, GPIB address and the COM port matches the SERP settings.





4. Connect the phone to the test instrument as shown in the *Calibration Setup*.
5. Click on the **Start Test** button in the main window to start the calibration.
6. After some time a notification pop up. If USB are connected then start phone manually, wait 80sek (10sek after display power off), then press OK.
If USB are not connected then connect USB, wait 80sek (10sek after phone vibrates), then press OK.
7. Monitor the progress of the calibration by viewing the information presented in the **Result tab**.

If the calibration fails, troubleshoot according to the *1243-7092 J108 Troubleshooting Guide – electrical*.

2.2.4 Re-Customization

To be able to use the phone after completed calibration the appropriate signaling code for the desired operator has to be reloaded.

If applicable, a Content Refresh has to be done

Refer to *1237-5051 J108 Customization* for more details on Customization.



3 Revision History

Rev.	Date	Changes / Comments
1	2011-Mar-30	Initial release
2	2011-Apr-26	2.2.1 and 2.2.2 changed
3	2011-Aug-22	Revised Go/NoGo Testing
4	2012-Jan-12	Calibration instructions changed